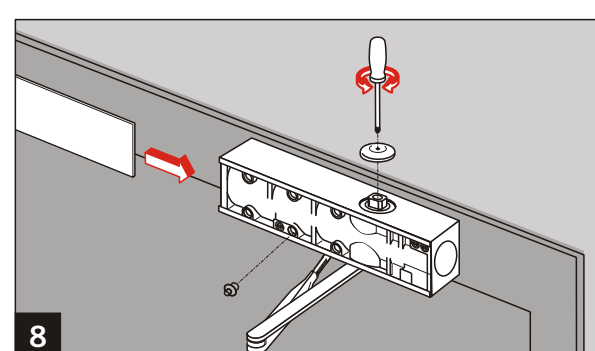
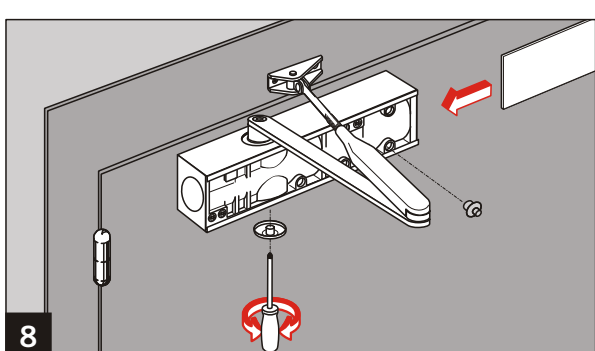
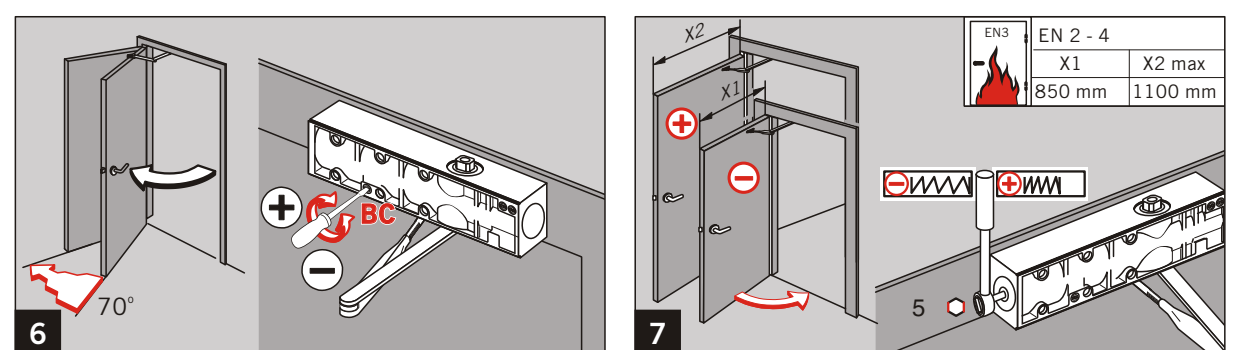
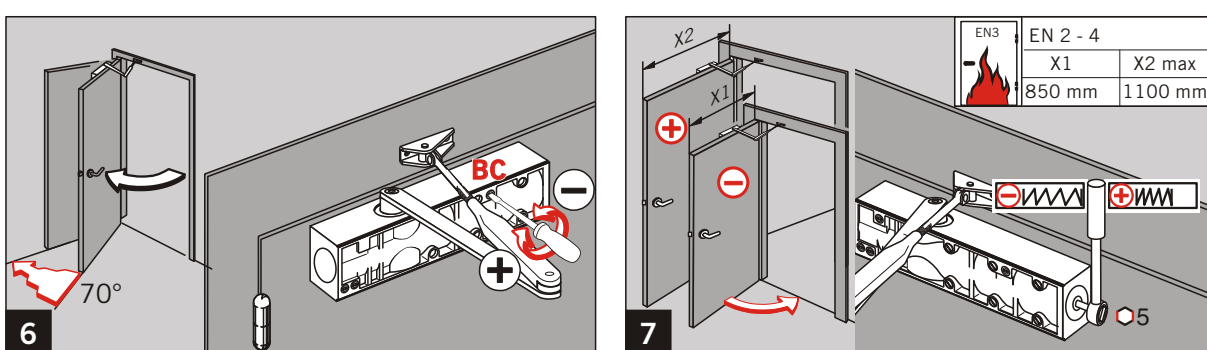
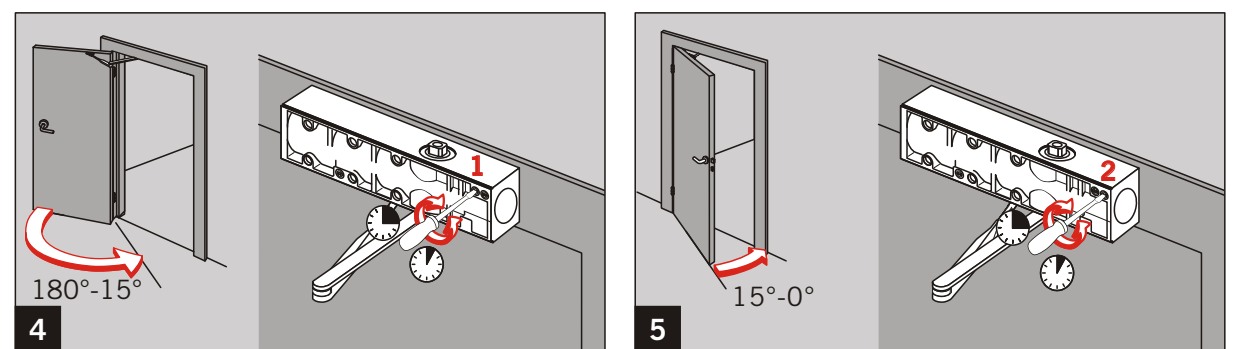
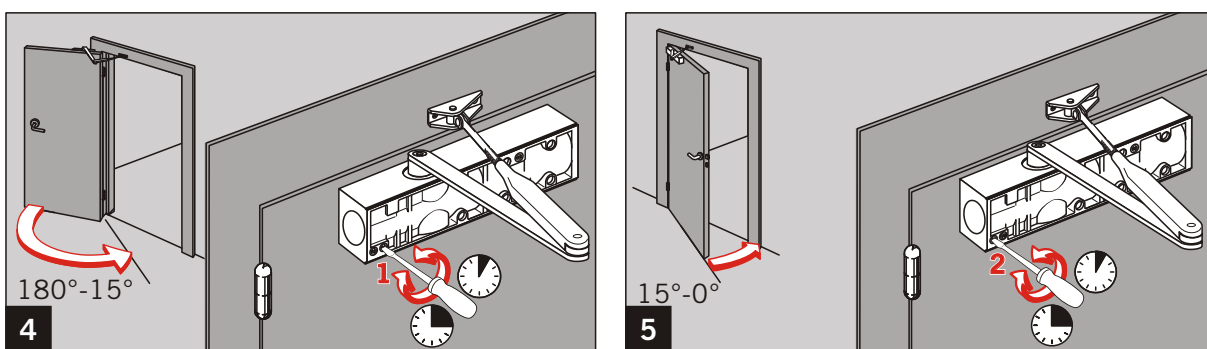
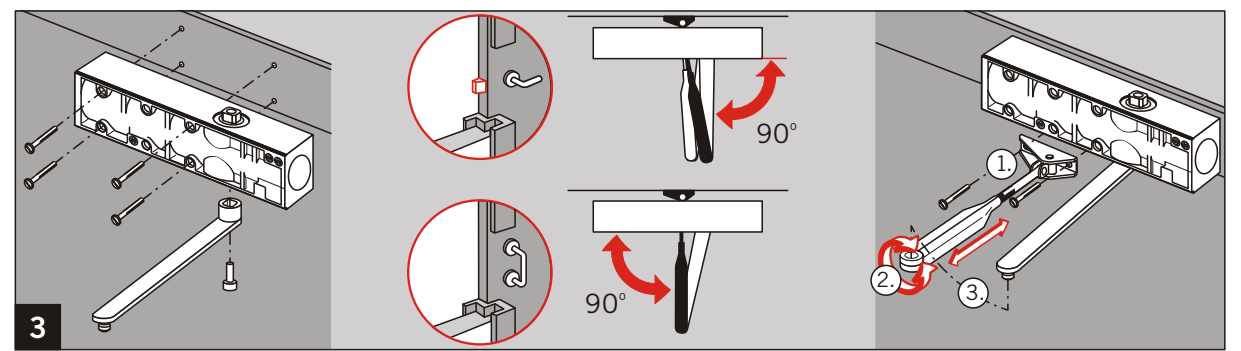
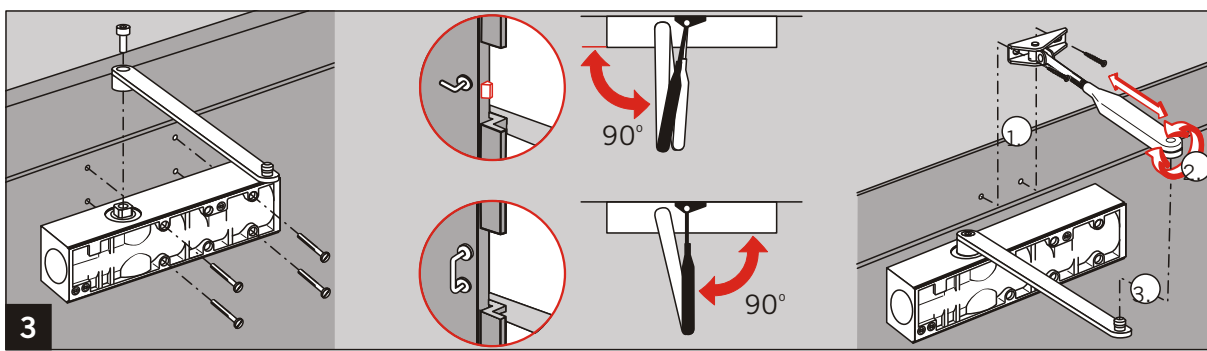
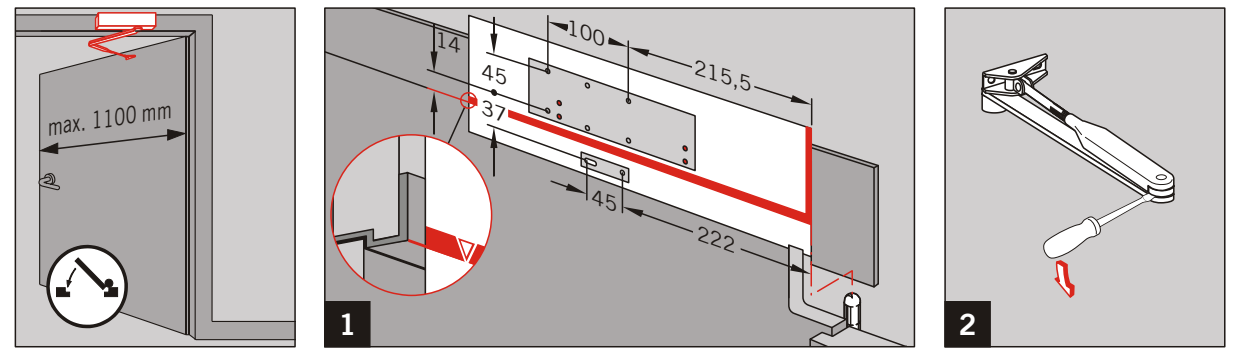
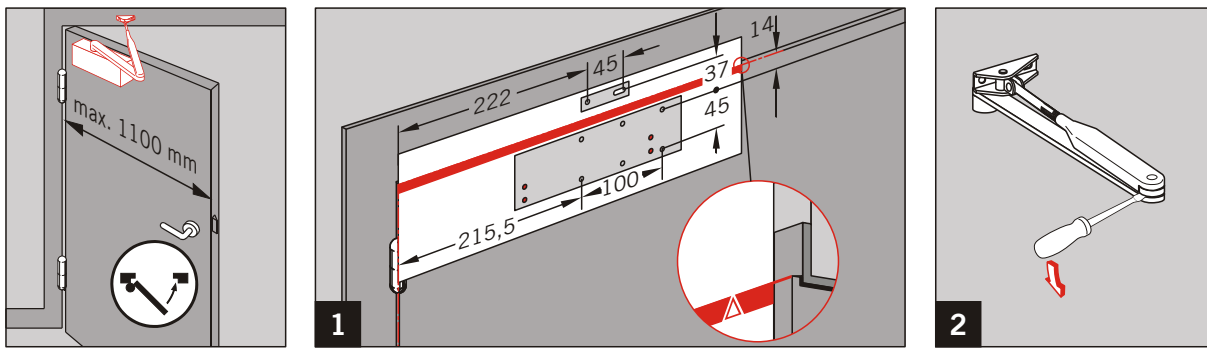
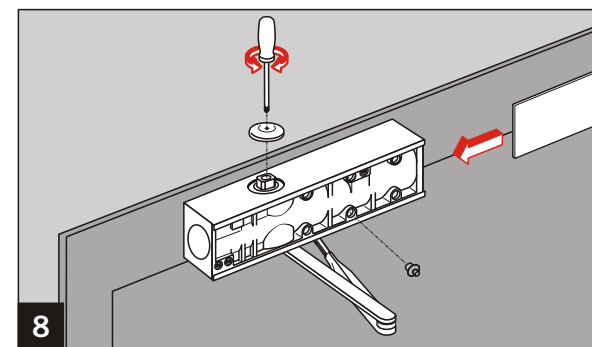
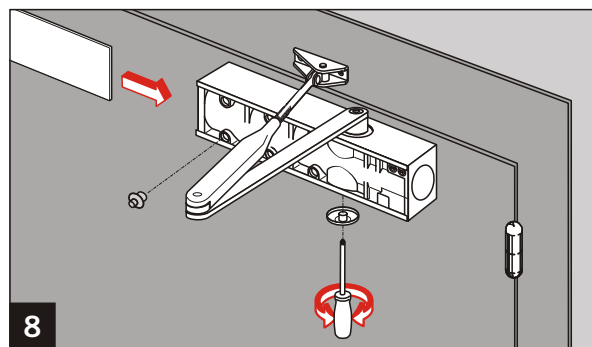
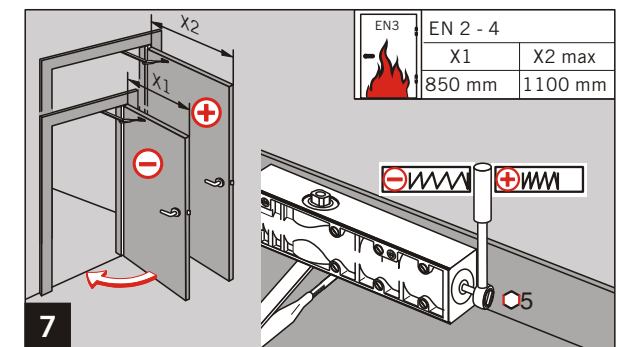
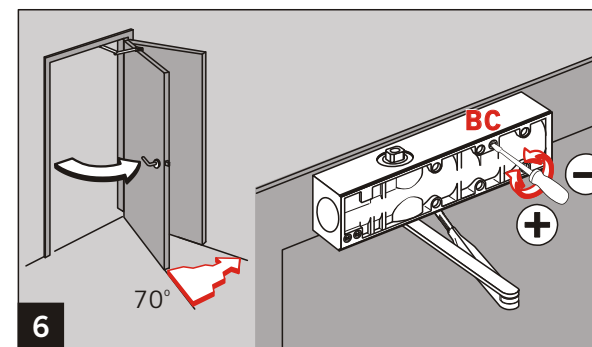
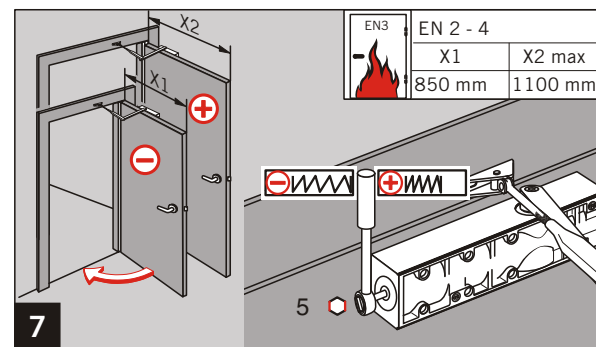
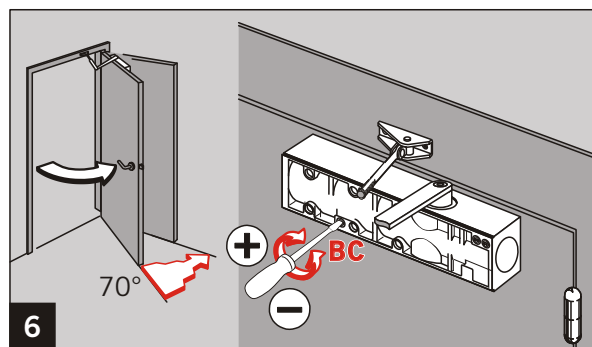
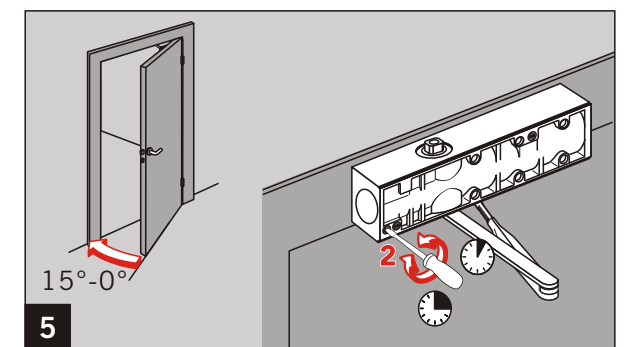
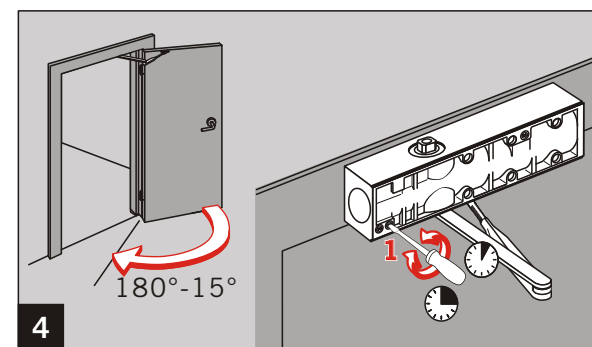
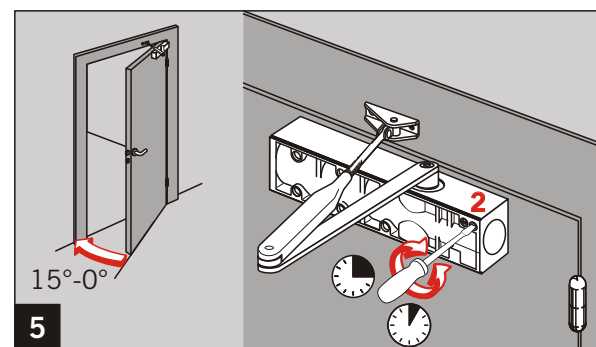
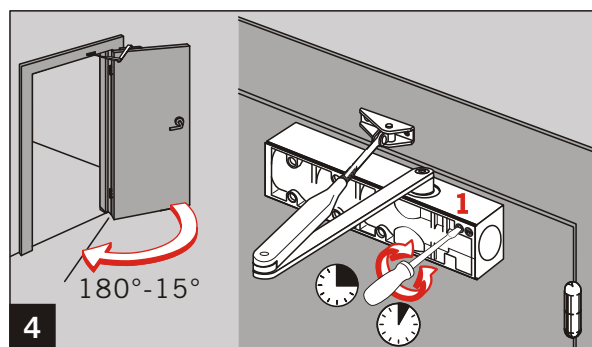
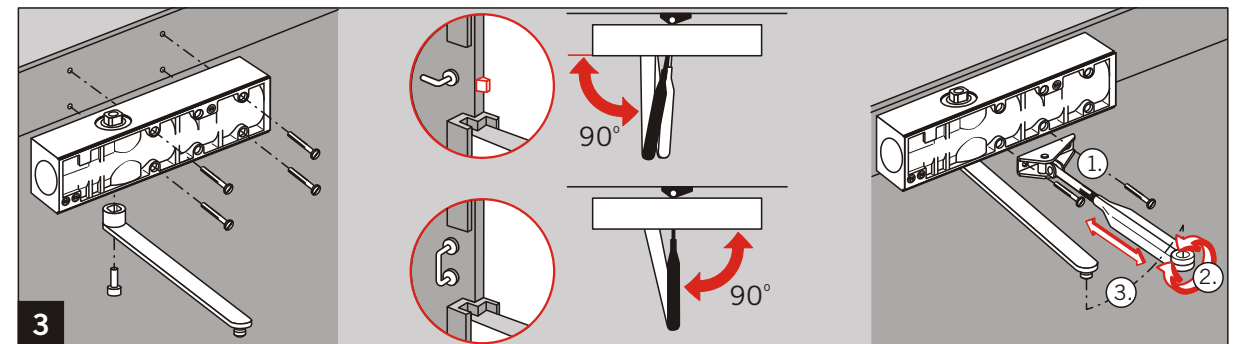
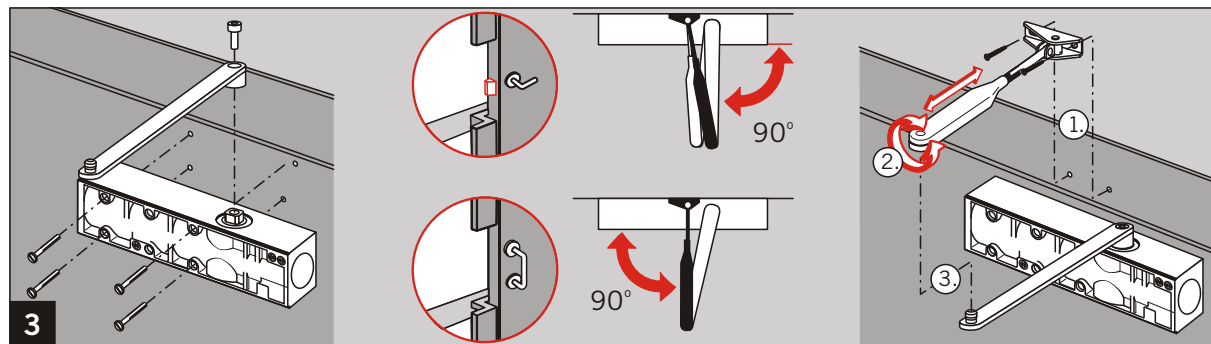
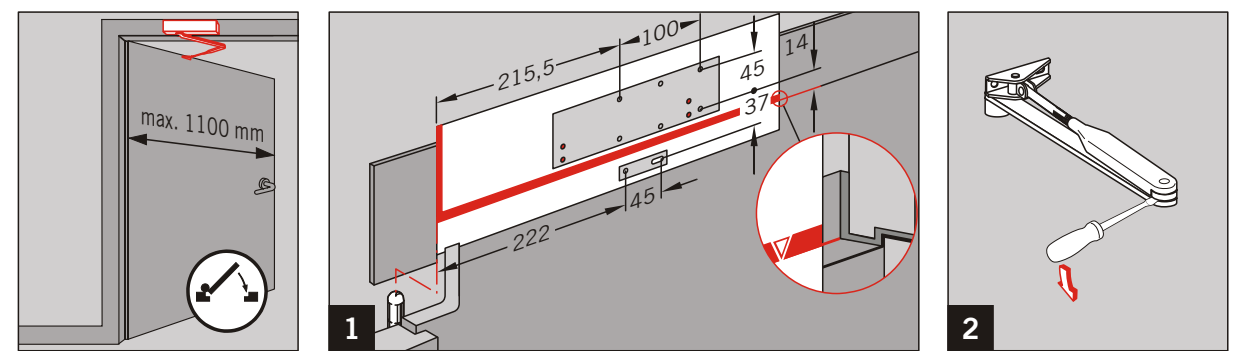
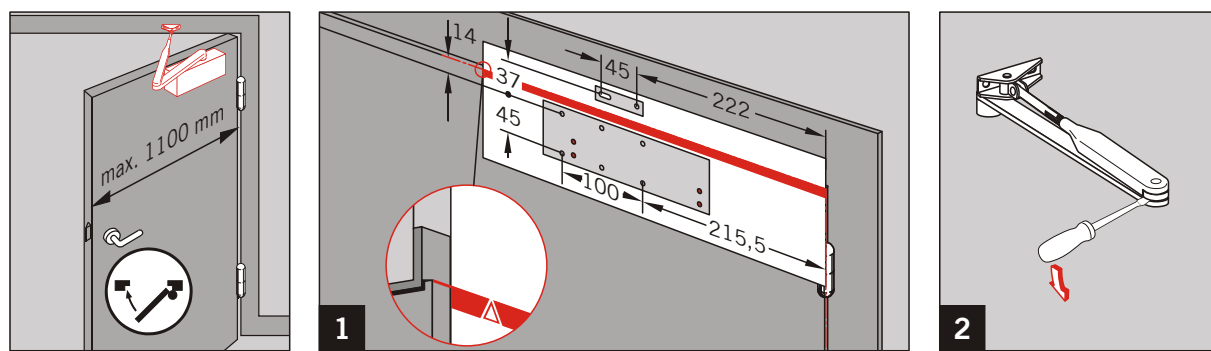
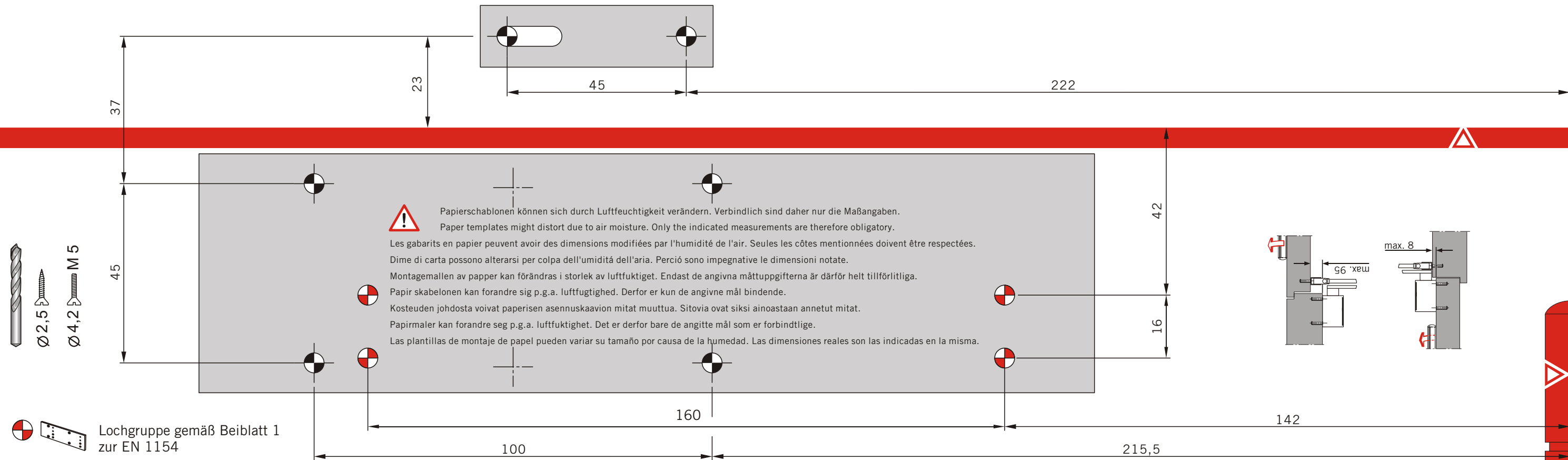


WN 056355 45532 01/06



04  
2 1 1 1 4  
4 8 4  
DORMA GmbH + Co. KG  
Postfach 4009  
58 247 Erpeletal  
0432 - BPR-0007 EN 1154:1996+A1:2002  
Dangerous substances: None



Änderungen vorbehalten  
Subject to change without notice